



# Service Tool

*If the Service Tool software is already installed on your PC, please skip to step 4.*

## **INSTALL SERVICE TOOL ON YOU WINDOWS PC:**

1. Download the “Service\_Tool\_Setup 2018” Application
2. Double click and follow installation process
3. Once completed the icon should appear on your Desktop

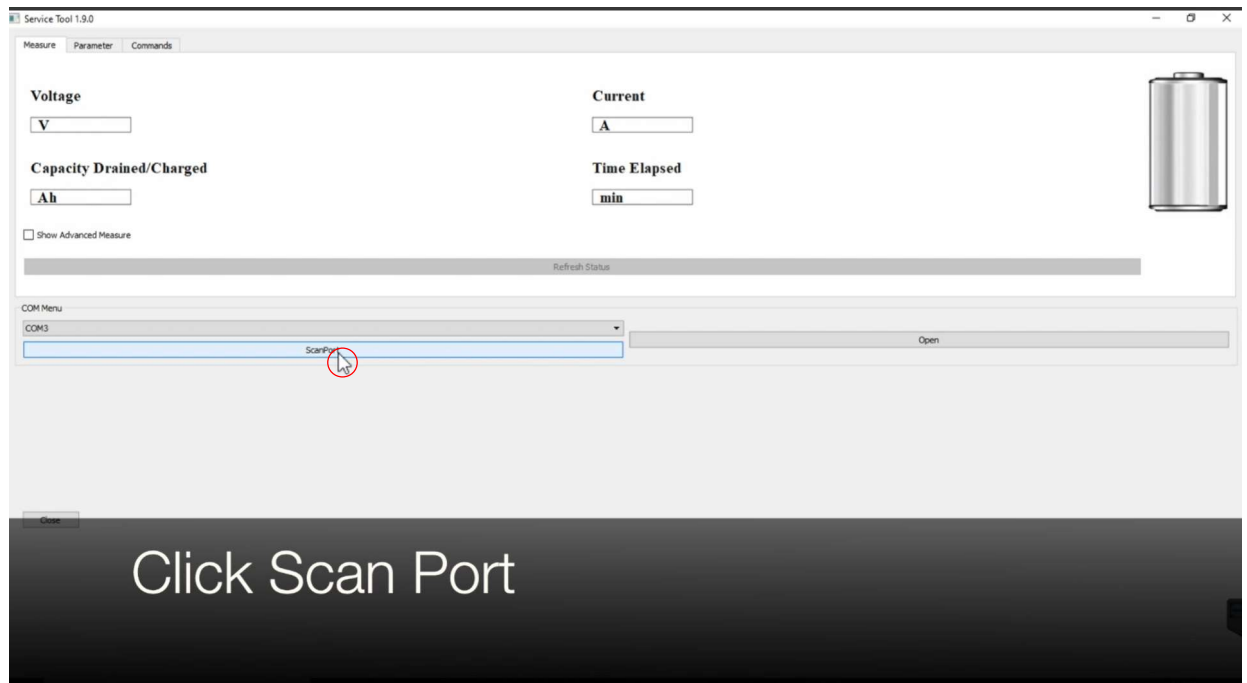


**Service Tool**

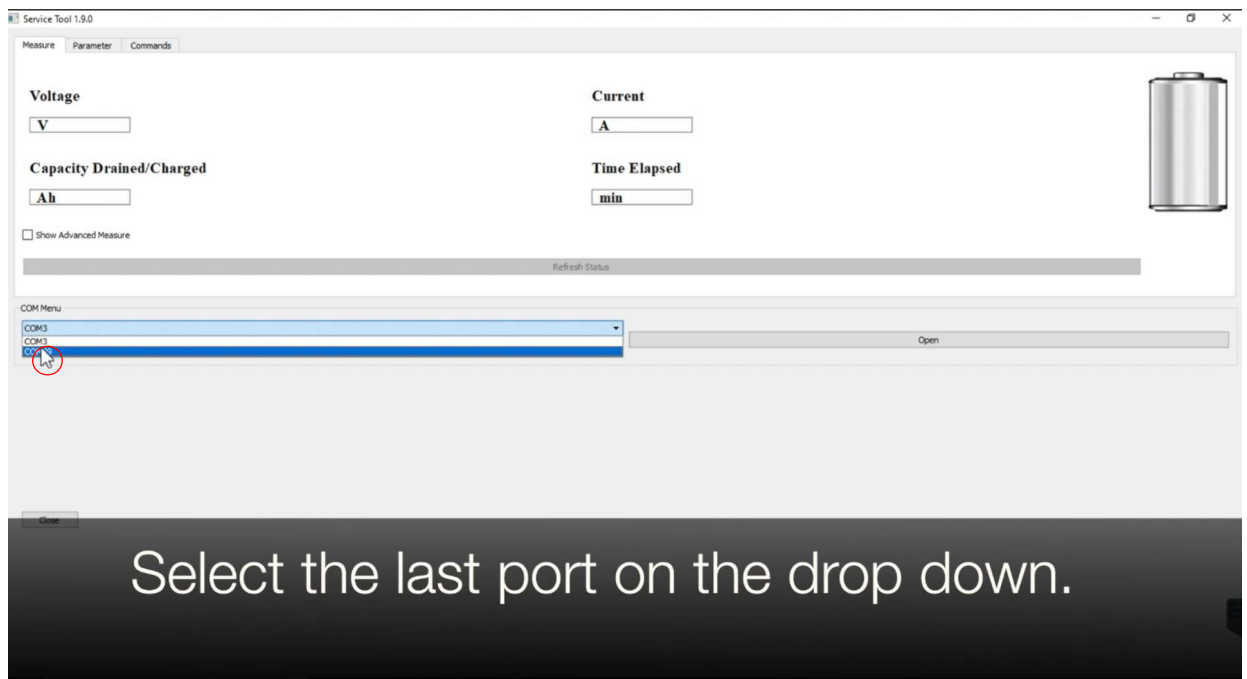
## **USE SERVICE TOOL TO RETRIEVE REPORTING:**

4. Click to open the “Service Tool” icon to start the program
5. Ensure the computer is wired in via supplied USB cord to the BDx Load Bank and the BDx is powered ON.
  1. To access the USB port on the BDx Load Bank, remove the round black cover on the right side of the BDx. This should be located near the top above the SB-350 Connector port.
6. Once the program is open and the computer and BDx is connected please complete the following steps.

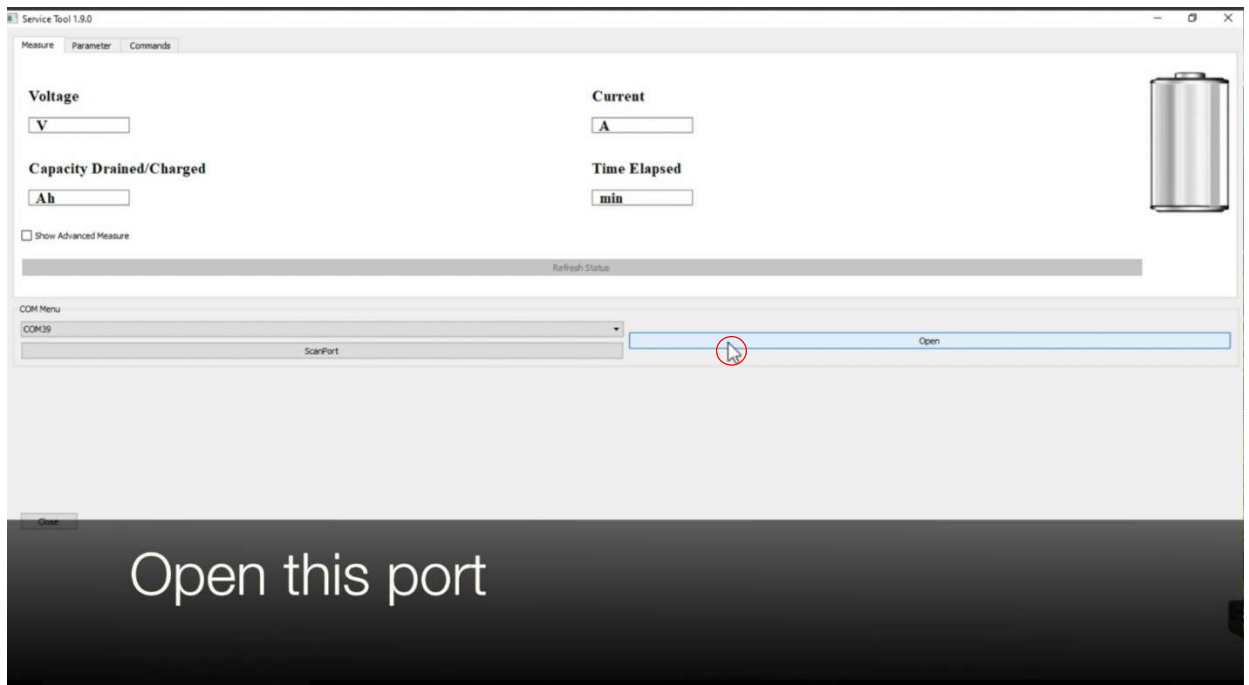
7.



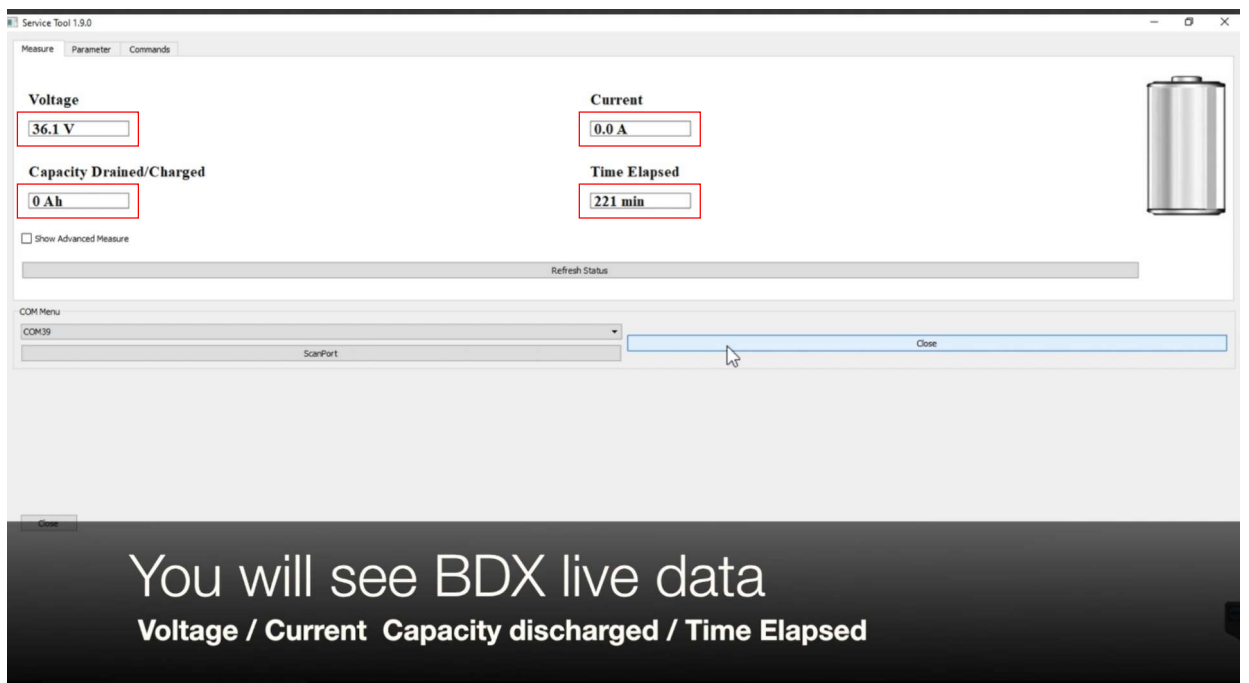
8.



9.



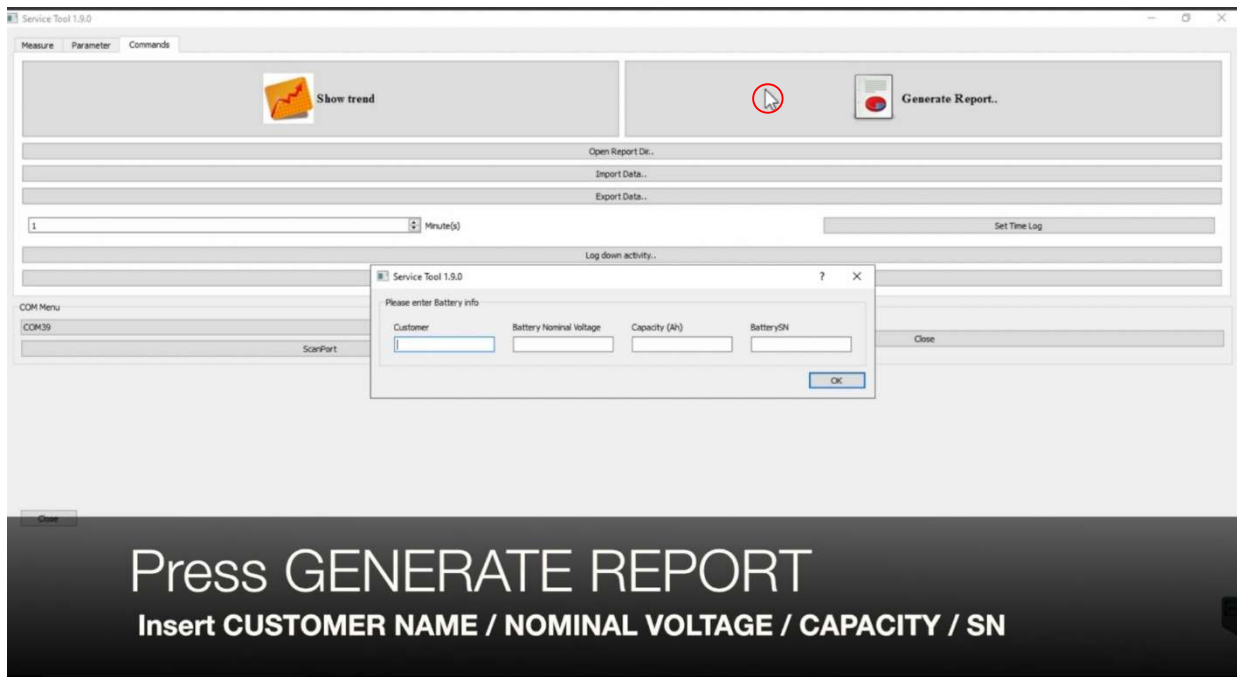
10.



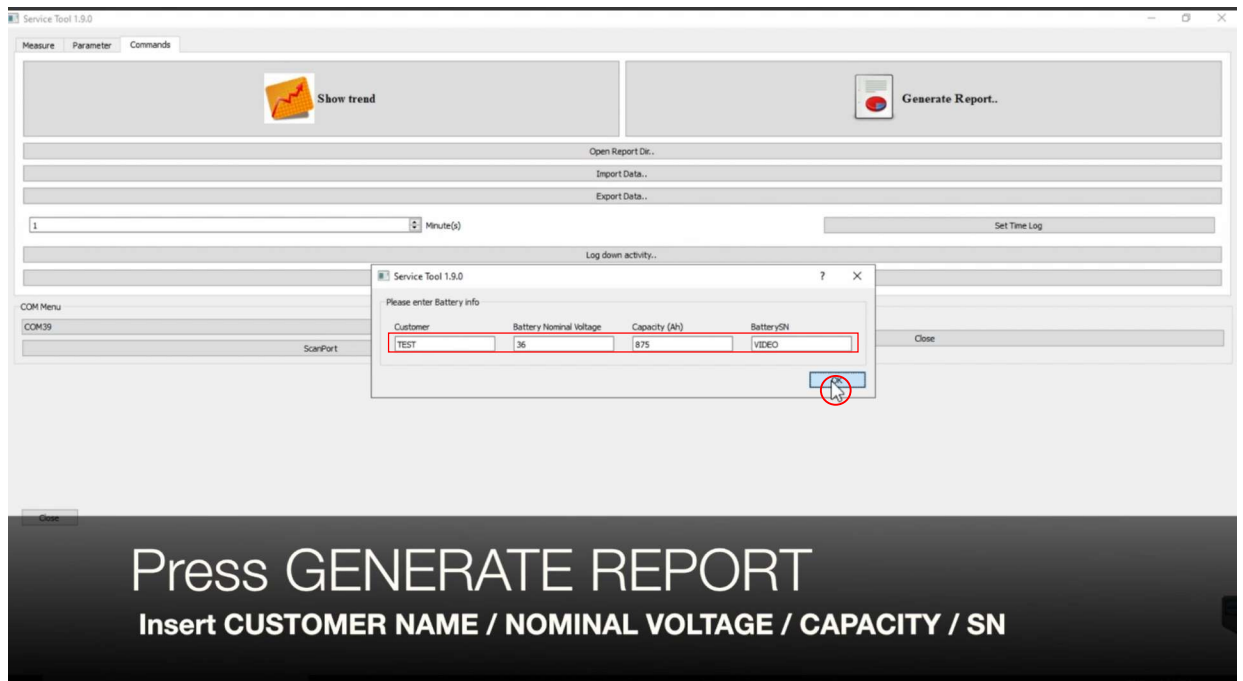
11.



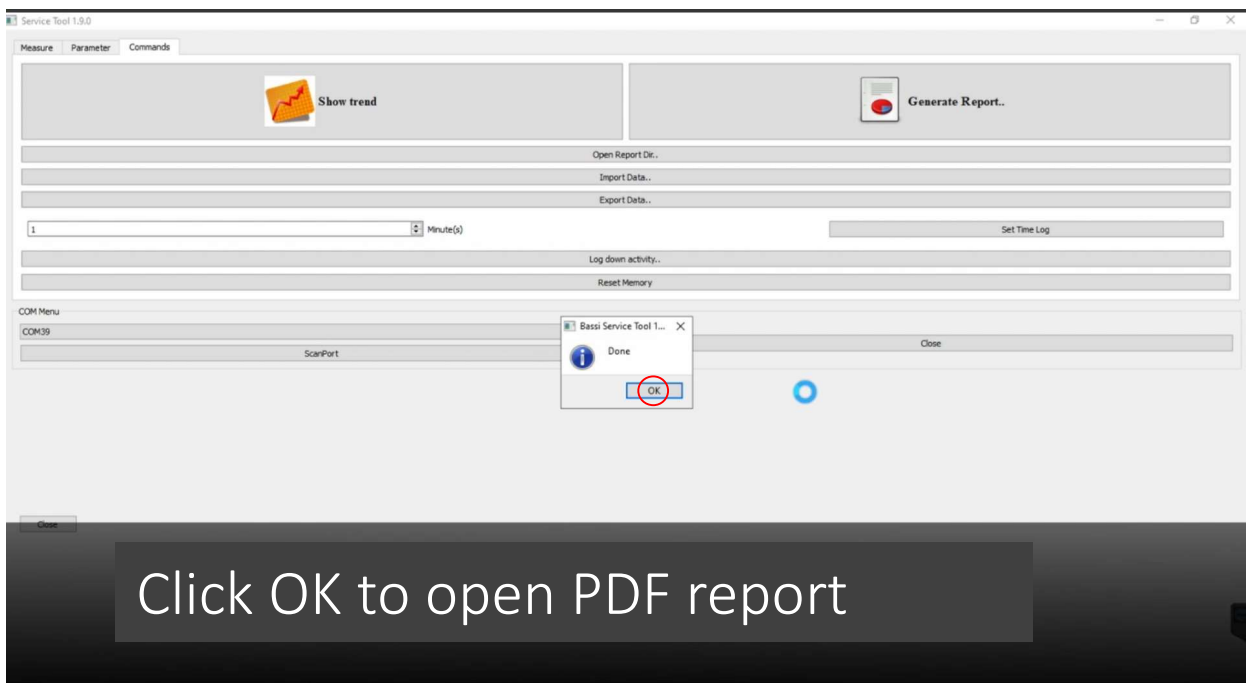
12.



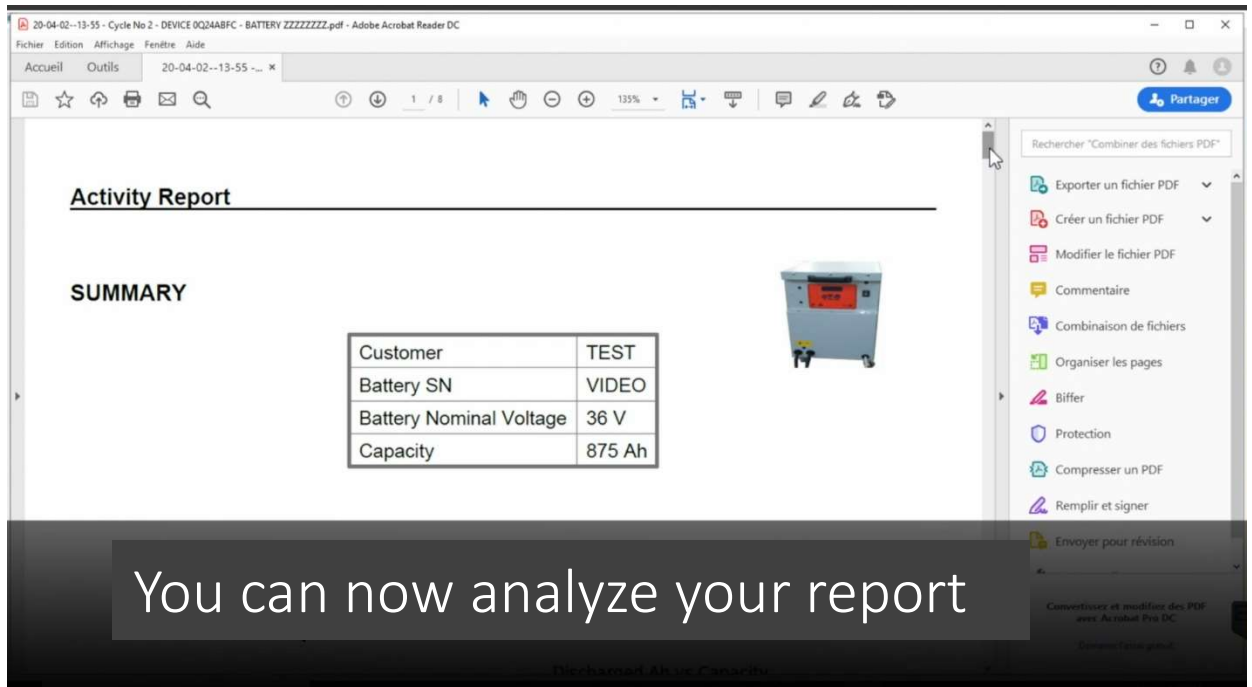
13.



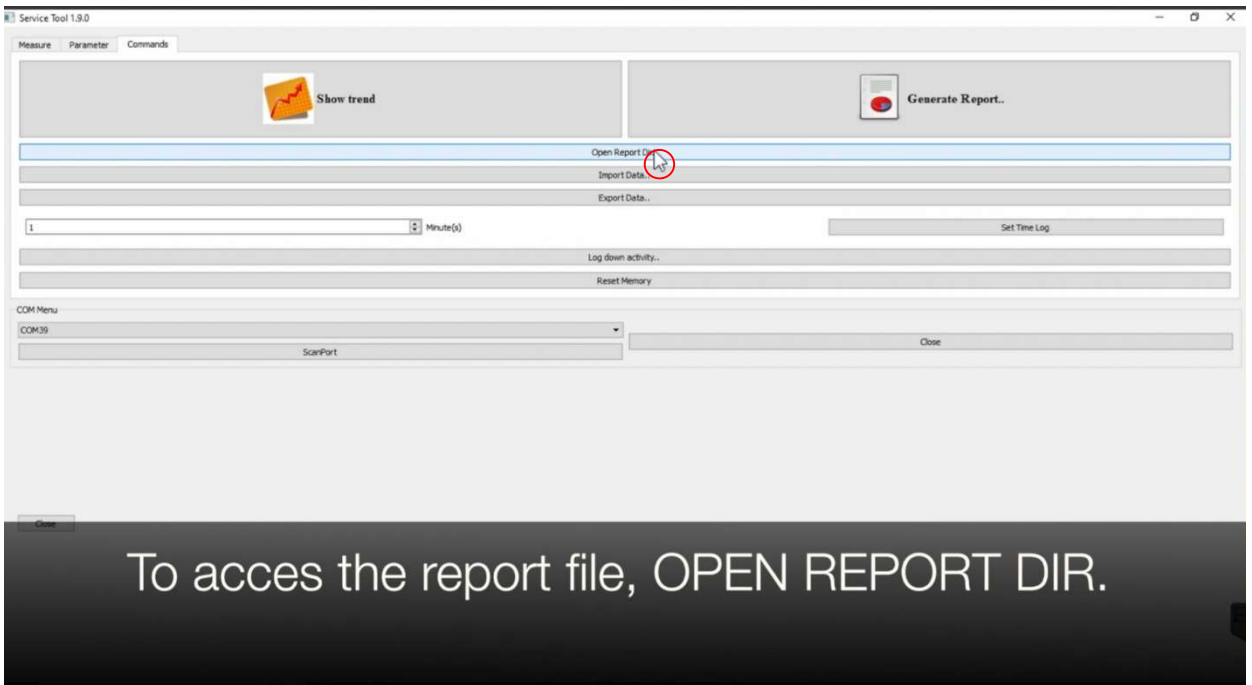
14.



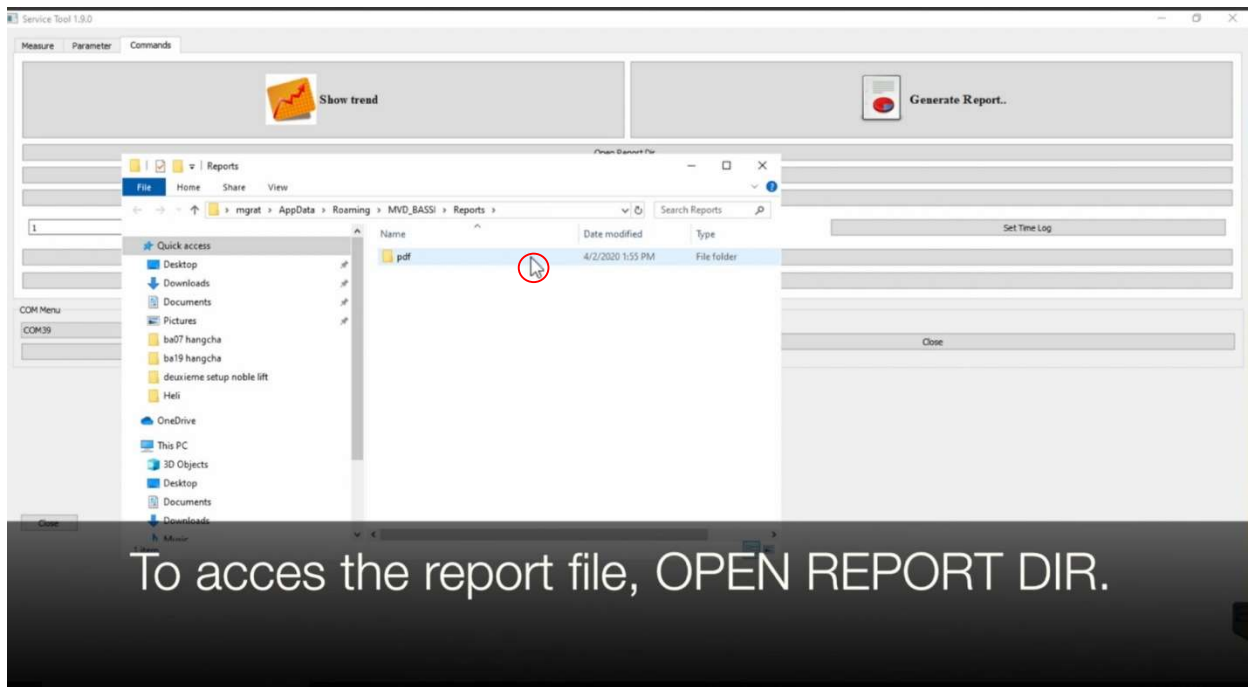
15.



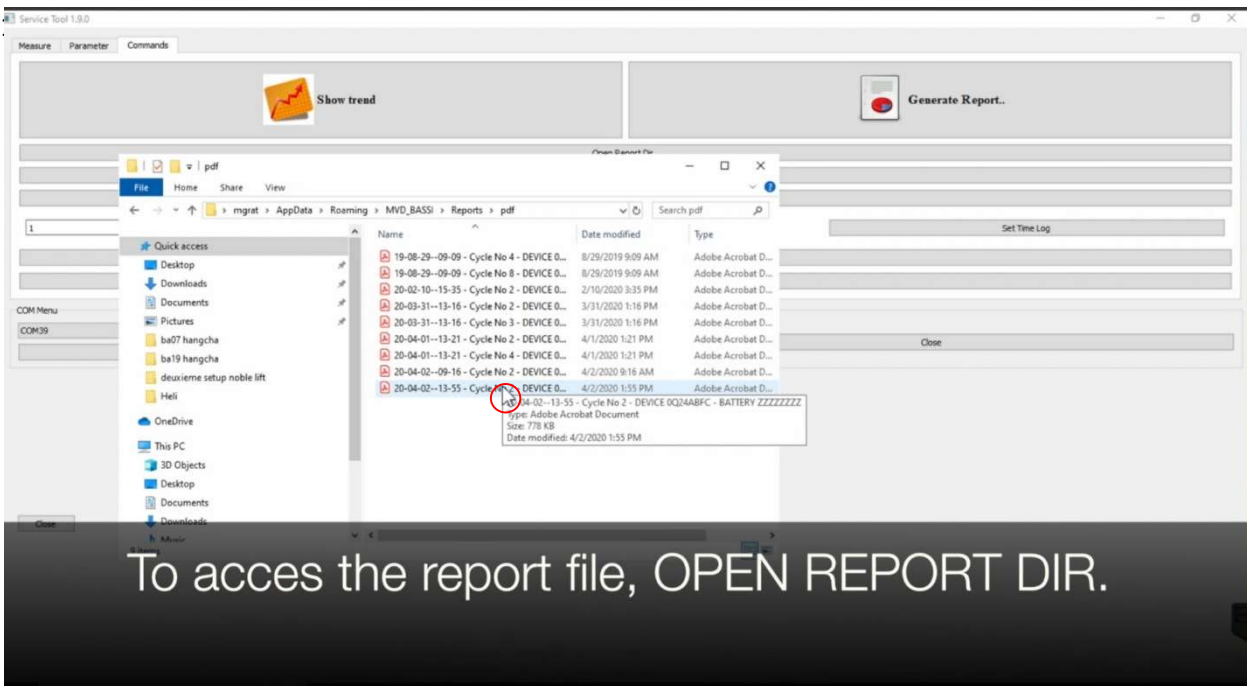
16.



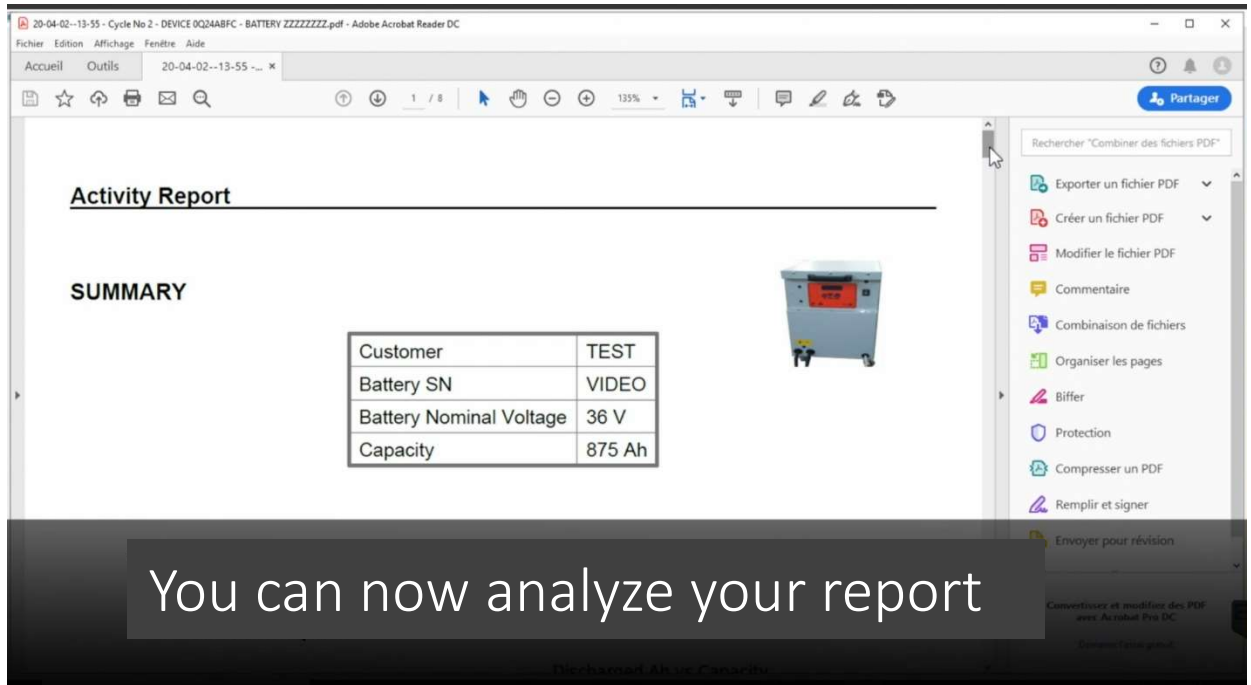
17.



18.



19.



For Service and Technical Questions:

**SPECTRE**  
INDUSTRIES

PO Box 39562, Solon, OH 44139

Tel: 440-665-2600

[www.spectreind.com](http://www.spectreind.com)